



engineered for life™



SAUDI ARABIA CORPORATE CATAL^oGUE







Table of Contents

About Rheem

| | |
|----|---------------------------------------|
| 03 | Global Presence |
| 05 | Rheem's Middle East & Africa Presence |
| 07 | Family of Brands |
| 09 | History |
| 11 | Sustainability Goals |
| 12 | 360+1 Philosophy |

Air Conditioning Section

Mini Splits

| | |
|----|-------------------|
| 15 | RW Rotary |
| 19 | RW Inverter |
| 21 | RC Cassettes |
| 23 | RF Floor Standing |

Ducted Splits

| | |
|----|-----------|
| 25 | RVRL-RIRL |
| 27 | EL3T+EA14 |
| 29 | SSGN+SPRL |

Packaged Units

| | |
|-------|-------------------|
| 31 | SSPM |
| 33-35 | EMRHR 5TR to 30TR |

VRF

| | |
|----|--------|
| 37 | SAVR-D |
|----|--------|

Water Heating Section

Residential Water Heating Solutions

| | |
|----|---------------------------|
| 43 | Proterra Hybrid Heat Pump |
| 45 | Solar Thermosiphon |
| 47 | Fury Electric |
| 49 | Point of Use |

Commercial Water Heating Solutions

| | |
|----|---------------------|
| 51 | E-Series |
| 53 | EVR-Series |
| 55 | A2W & W2W Heat Pump |
| 57 | RHC Calorifiers |



Global Presence.

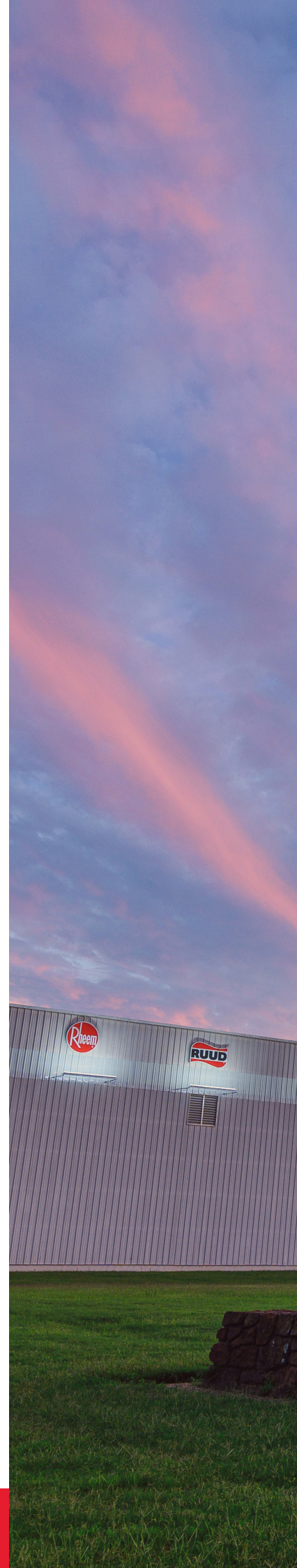
For 100 years, Rheem has pioneered innovative air conditioning and water heating solutions.

Our journey began in 1925, as a small family business based in Arkansas, USA. Since then, we have evolved into a global symbol of trust and quality within the industry, having our headquarters in Atlanta.

While the company has produced a number of products in its 100 years of operation, Rheem is currently the only manufacturer in the world that produces heating, cooling, water heating, pool & spa heating and commercial refrigeration products, and it is the largest manufacturer of water heating products in North America.

From industry-leading technologies to next-generation energy efficiencies, Rheem has been a pioneer in developing some of the most innovative advancements in heating, cooling and water heating. With a long list of award-winning solutions, Rheem continues to deliver advanced comfort, savings and experiences to our customers just as we've done for nearly 100 years.

We are committed to making a difference with the products we create for the people we serve, and for the planet we call home.





11 R&D centres

13 Rheem
business offices

23 Manufacturing
facilities

14k+ Employees

50+ Global air &
water brands

88 Countries
of coverage

Middle East & Africa Regional Presence.

In 2020, Rheem established its Innovation and Learning Centre (ILC) in Dubai, UAE. This cutting-edge facility serves as a dynamic platform for training, conferences, and workshops, leveraging advanced technology to provide an immersive learning experience.

HVAC and plumbing professionals, engineers, and other industry stakeholders gain first-hand insights into Rheem's extensive range of residential and commercial HVAC systems and water heating solutions.

Rheem MEA achieved a significant milestone in 2021 with the inauguration of its state-of-the-art manufacturing hub in Dubai, UAE, solidifying its presence in the GCC and enhancing its global footprint.

This advanced facility specialises in producing high-quality HVAC solutions, including packaged air conditioning systems designed to cater to diverse requirements and budgets.





As a testament to Rheem's commitment to excellence and sustainability, the Dubai manufacturing hub plays a pivotal role in delivering reliable, energy-efficient solutions to customers across the Middle East and Africa.

Further expanding its regional presence, Rheem inaugurated its largest ILC in Riyadh, KSA, in 2024. Serving as the company's regional headquarters, this flagship facility underscores Rheem's commitment to fostering innovation, knowledge-sharing, and excellence in the HVAC industry.

We operate in more than 80 countries worldwide and across the Middle East and Africa: UAE, Saudi Arabia, Kuwait, Qatar, Bahrain, Oman, Egypt & Iraq.

Our Regional Presence





Family of Brands



Timeline

1889

Edwin RUUD invents the first gas storage water heater.



1925

Brothers Richard and Donald Rheem establish Rheem Manufacturing Company.



1930-1950

Automatic gas storage water heaters are produced under the Ruud business. Rheem enters the HVAC business, advertising central heating & air conditioning systems.



2009-2010

- Rheem introduces tankless water heaters.
- Research & development (R&D) lab opens in Mexico.

2012

Established Rheem Manufacturing MEA FZE (UAE office).

2020

Opens Innovation and Learning Centre in UAE.

1970

Air conditioning headquarters open in Fort Smith, Arkansas. Water heating headquarters are established in Montgomery, Alabama.

**1980-1990**

- Paloma Co. Ltd of Nagoya, Japan, acquires Rheem.
- Creates the Richmond brand for Water Heating.
- Opens Nuevo Laredo (WHD).

**2000-2008**

- Rheem® pioneers the first gas storage water heater, originally patented by Edwin RUUD in 1890.
- Nuevo Laredo (ACD) opens.
- Rheem's headquarters open in Atlanta.

**2021**

Opens new air conditioning factory in UAE.

**2024**

Opens the largest Rheem Innovation Learning Centre in Saudi Arabia.

**2025**

Celebrates 100 years of innovation.

Our Commitment to Sustainability

At Rheem, we are committed to developing products which consume fewer resources, generate less waste and ensure simpler, safer processes. These solutions are designed to dramatically cut our impact on the environment, whilst empowering both our customers and employees to work and live sustainably.



Degrees of innovation

We are focused on innovating with intent, engineering solutions with lifetime sustainability in mind — from material selection, to smart features, to responsible recycling.



Degrees of efficiency

We strive for operational excellence, working smarter and more sustainably to consume fewer resources, generate less waste and ensure simpler, safer processes.



Degrees of leadership

We hire and inspire our teams to be next-generation thinkers and responsible stewards of our industry, the greater community, and the environment.

Our 360+1 Philosophy

At Rheem, our 360+1 philosophy is at the centre of everything we do. Over the past century, we have pioneered smart solutions that meet the heating, cooling and water heating needs of contractors and homeowners alike.

We believe in delivering excellence at every angle – from design, to performance, to partnership and beyond. We delve into every detail, from top to bottom and inside out.

We continuously interrogate and evaluate the work that goes into installing and servicing our products, to ensure that we are delivering the best experience possible – and then we push it even further.

We are committed to total sustainability, reliability, comfort and control in each of our products, and we always go that extra degree to exceed the expected. This is why we're more than a provider; we're your trusted partner.



360° Performance™

Performance is not just about numbers.

It's also about reliability – for today, tomorrow and for years to come. With every product we design and develop, we set out to lower energy consumption and operating costs. Our work continuously drives us towards optimal efficiency, to deliver better results for people and our planet.



360° Installability™

We continuously add innovative new features to our product line-up to make installation faster, easier and more cost-effective. This seamless approach is integral to what we do. In fact, we think this aspect of our products is so important, that we coined a new term for it: Installability™.



360° Serviceability™

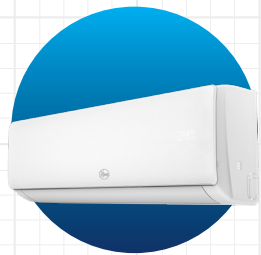
We work smarter, so you don't have to work harder. Serviceability is a cornerstone of our work. We ensure that our products are developed with easy access to unit components in mind, and our diagnostic systems are intelligently designed to make problem-solving quicker and easier.

Air Conditioning System

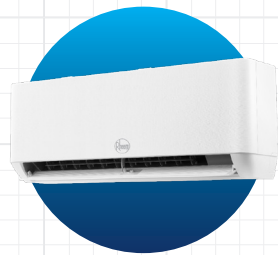


**AIR CONDITIONING
ENGINEERED TO
THE NEXT LEVEL.**

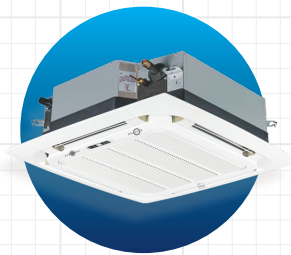
Mini Splits



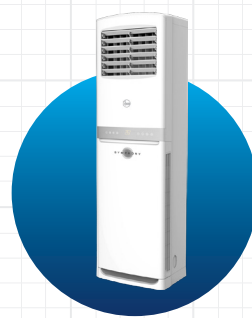
RW Rotary



RW Inverter

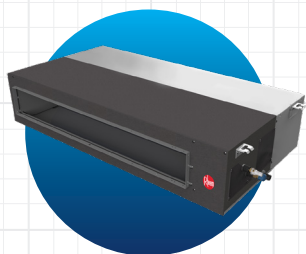


RC Cassettes

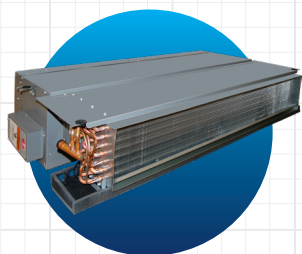


RF Floor Standing

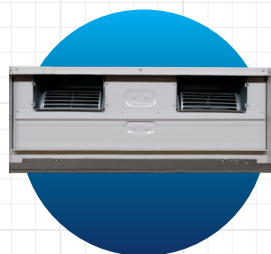
Ducted Splits



RVRL-RIRL

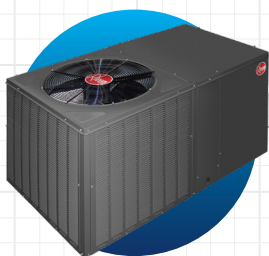


EA14+EL3T

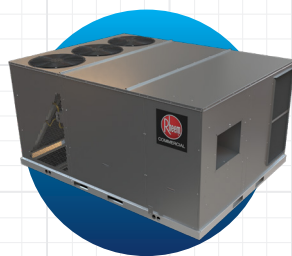


SSGN+SPRL

Packaged Units



SSPM



EMRHR
Below 10TR



EMRHR
Above 10TR

VRF



SAVR-D

RW Rotary



***RUST PROOF,
DURABLE AND
PROTECTED.***

Features



Smart Air Flow

In cooling mode, the cool air blows towards the ceiling to provide a shower-style cooling experience. In heating mode, the warm air blows towards the floor to provide a blanket-style heating experience.



Inner-Grooved Copper Tubes

With the high quality inner-grooved copper, the thermal conductivity is significantly improved by 20-30% more than that of smooth tubes, because of the increased surface area of the inner copper wall.



Leakage Detection

In cooling mode, the evaporator coil sensor monitors temperature and automatically stops operation if a refrigerant leak is detected. An error code is then displayed on the indoor unit panel.



Rust-proof, strong corrosion resistance and excellent insulation

Rust-proof technology protects the outdoor unit from corrosion and extends the system life. Prevention of water, insects and dust, with reliable electric control.



I FEEL

The remote controller's built-in temperature sensor monitors the surrounding environment, allowing the air conditioner to adjust room temperature more precisely for enhanced comfort.



Safety Design

Safety design isolates condensate from electrical systems, while the fireproof BMC control box resists heat and corrosion.

Technical Table

| Indoor Model | RINW18CCT02 | RINW24CCT01 | RINW30CCT01 | RINW36CCT01 |
|---|--------------|--------------|--------------|--------------|
| Outdoor Model | RONW18CRCT02 | RONW24CRCT01 | RONW30CRCT01 | RONW36CRCT01 |
| T1 Rated Capacity (BTUH) | 18000 | 22000 | 27200 | 28600 |
| T1 Rated EER | 12 | 12 | 12 | 12 |
| T1 Rated Power (W) | 1500 | 1833 | 2194 | 2383 |
| T3 Rated Capacity (BTUH) | 16100 | 19400 | 23600 | 24400 |
| T3 Rated EER | 8.5 | 8.7 | 8.7 | 8.5 |
| T3 Rated Power (W) | 1894 | 2700 | 2713 | 2871 |
| Compressor Type | Rotary | Rotary | Rotary | Rotary |
| IDU Shipping Weight (kg) | 16 | 21 | 22 | 22 |
| ODU Shipping Weight (kg) | 38 | 48 | 59 | 63 |
| IDU Shipping Dimensions (H x L x W)(mm) | 297x1096x390 | 337x1262x440 | 337x1262x420 | 337x1262x420 |
| ODU Shipping Dimensions (H x L x W)(mm) | 732x430x960 | 732x960x430 | 840x1025x420 | 840x1025x420 |
| Refrigerant Connections -(mm) Liquid | 6(1/4") | 6(1/4") | 6(1/4") | 6(1/4") |
| Refrigerant Connections -(mm) Vapor | 12(1/2") | 12(1/2") | 15.88(5/8") | 15.88(5/8") |
| Indoor Model | RINW18CHT00 | RINW24CHT02 | RINW30CHT01 | RINW36CHT01 |
| Outdoor Model | RONW18CRHT00 | RONW24CRHT02 | RONW30CRHT01 | RONW36CRHT01 |
| T1 Rated Capacity (BTUH) | 18000 | 21600 | 26400 | 28800 |
| T1 Rated EER | 12 | 12 | 12 | 12 |
| T1 Rated Power (W) | 1500 | 1800 | 2173 | 2323 |
| T3 Rated Capacity (BTUH) | 15500 | 19200 | 23400 | 24800 |
| T3 Rated EER | 8.5 | 8.7 | 8.7 | 8.7 |
| T3 Rated Power (W) | 1894 | 2207 | 2690 | 2851 |
| Compressor Type | Rotary | Rotary | Rotary | Rotary |
| IDU Shipping Weight (kg) | 16 | 22 | 22 | 22 |
| ODU Shipping Weight (kg) | 50 | 49 | 60 | 72 |
| IDU Shipping Dimensions (H x L x W)(mm) | 297x1096x390 | 337x1262x440 | 337x1262x420 | 337x1262x420 |
| ODU Shipping Dimensions (H x L x W)(mm) | 732x430x960 | 732x960x430 | 840x1025x420 | 840x1025x420 |
| Refrigerant Connections (mm) -Liquid | 6(1/4") | 6(1/4") | 6(1/4") | 6(1/4") |
| Refrigerant Connections (mm) - Vapor | 12(1/2") | 12(1/2") | 15.88(5/8") | 15.88(5/8") |



RW Inverter



**HITS PEAK SPEED
FOR 15% QUICKER
COOLING.**

Features

✓ Filter-Cleaning Reminder

After running for a particular period, the air-conditioner will automatically detect the cleanliness of the filter and remind users to clean the filter to avoid any bacteria formation.

✓ Fast Cooling

DC inverter air-conditioner enables the compressor to achieve maximum frequency in the shortest time from start up. It cools down 15% faster than conventional non-inverter air conditioners.

✓ ECO Mode

Activate ECO mode for optimal energy efficiency and comfort - the air conditioner adjusts automatically to save power while keeping your living space perfectly cool.

✓ Strong Cooling in High Ambient Temperature

No cooling capacity decline in 50°C ambient.
Non-stop cooling in 60°C ambient temperature.
Air-cooled electric control box technology is applied to effectively cool down temperature of electric parts in outdoor unit.

✓ Precise Cooling

A DC inverter air conditioner varies the compressor rotation speed to provide a precise method of maintaining the set temperature.

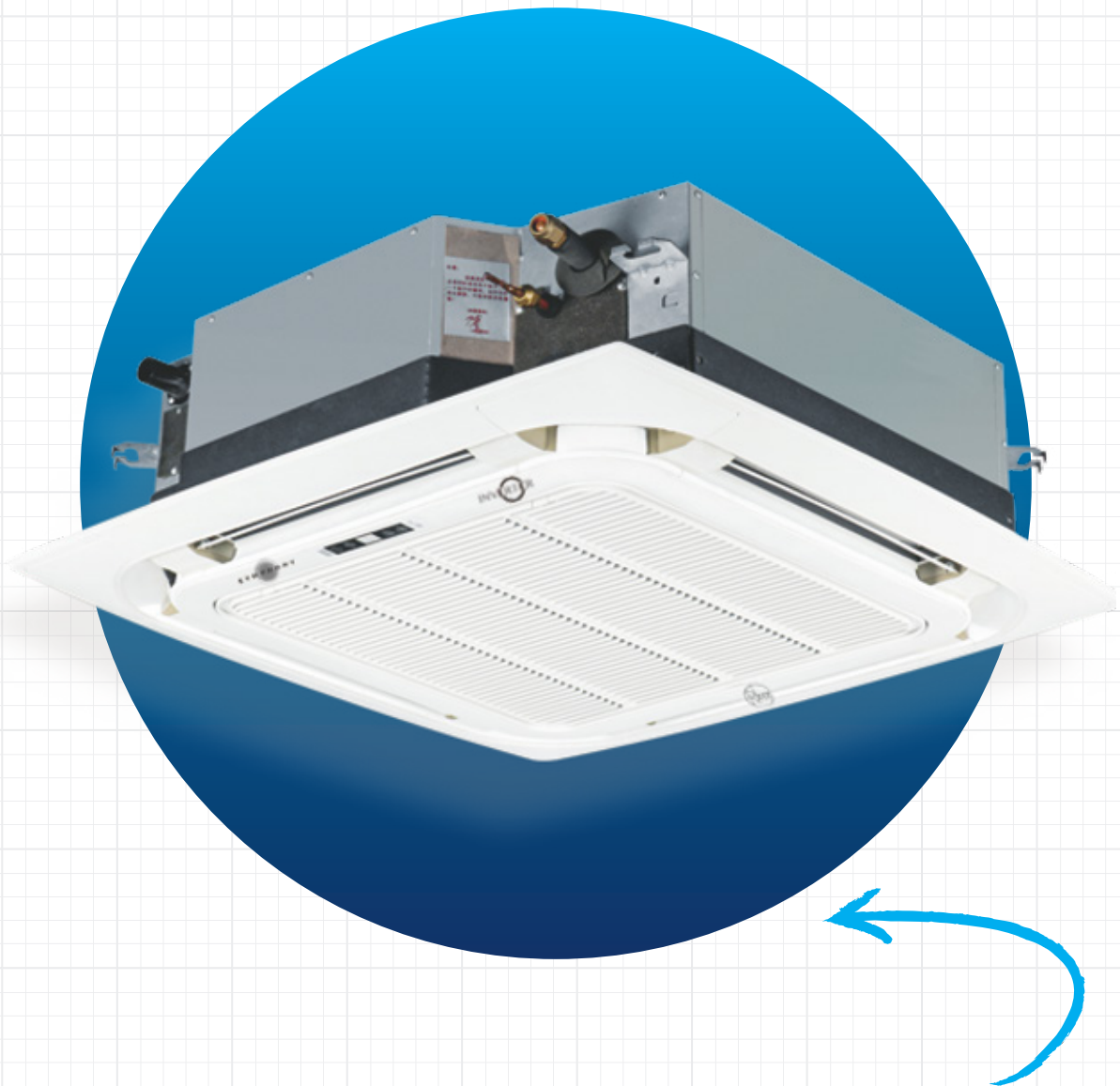
✓ Inner-Grooved Copper Tubes

With the high quality inner-grooved copper the thermal conductivity is significantly improved by 20-30% more than that of smooth tubes, because of the increased surface area of the inner copper wall.

Technical Table

| Indoor Model | RINW12CIHT01 | RINW18CIHT01 | RINW24CIHT01 |
|---|--------------|--------------|--------------|
| Outdoor Model | RONW12CIHT01 | RONW18CIHT01 | RONW24CIHT01 |
| T1 Rated Capacity (BTUH) | 12300 | 18200 | 23000 |
| T1 Rated EER | 12.5 | 12.0 | 12.5 |
| T1 Rated Power (W) | 984 | 1517 | 1840 |
| T3 Rated Capacity (BTUH) | 11700 | 17400 | 21000 |
| T3 Rated EER | 9.5 | 8.5 | 9.1 |
| T3 Rated Power (W) | 1232 | 2047 | 2308 |
| Compressor Type | Inverter | Inverter | Inverter |
| IDU Shipping Weight (kg) | 11.50 | 17.00 | 16.50 |
| ODU Shipping Weight (kg) | 29.50 | 45.00 | 57.00 |
| IDU Shipping Dimensions (H x L x W)(mm) | 277x979x372 | 295x1165x405 | 295x1165x405 |
| ODU Shipping Dimensions (H x L x W)(mm) | 610x852x358 | 732x50x420 | 840x1025x480 |
| Refrigerant Connections (mm) -Liquid | 6(1/4") | 6(1/4") | 6(1/4") |
| Refrigerant Connections (mm) - Vapor | 9.52(3/8") | 12(1/2") | 15.88(5/8") |

RC Cassettes



**QUICK COOL WITH
INVERTER SPEED.**

Features

✓ 180°Sine Wave Control

The DC inverter compressor uses 180° sine wave vector control technology, allowing the motor to operate smoothly, significantly improving efficiency.

✓ Optimised Pipeline Design

The design ensures sub-cooling and enhances the cooling capacity by separating the refrigerant inlet and outlet.

✓ Built-In Drain Pump

The built-in drain pump can lift condensing water up to 1200mm high from the drainage pan.

✓ Fresh Air Intake

Fresh air makes indoor air healthy and comfortable.

✓ Optimised Electric Box

Enhanced fire safety with low-maintenance design.

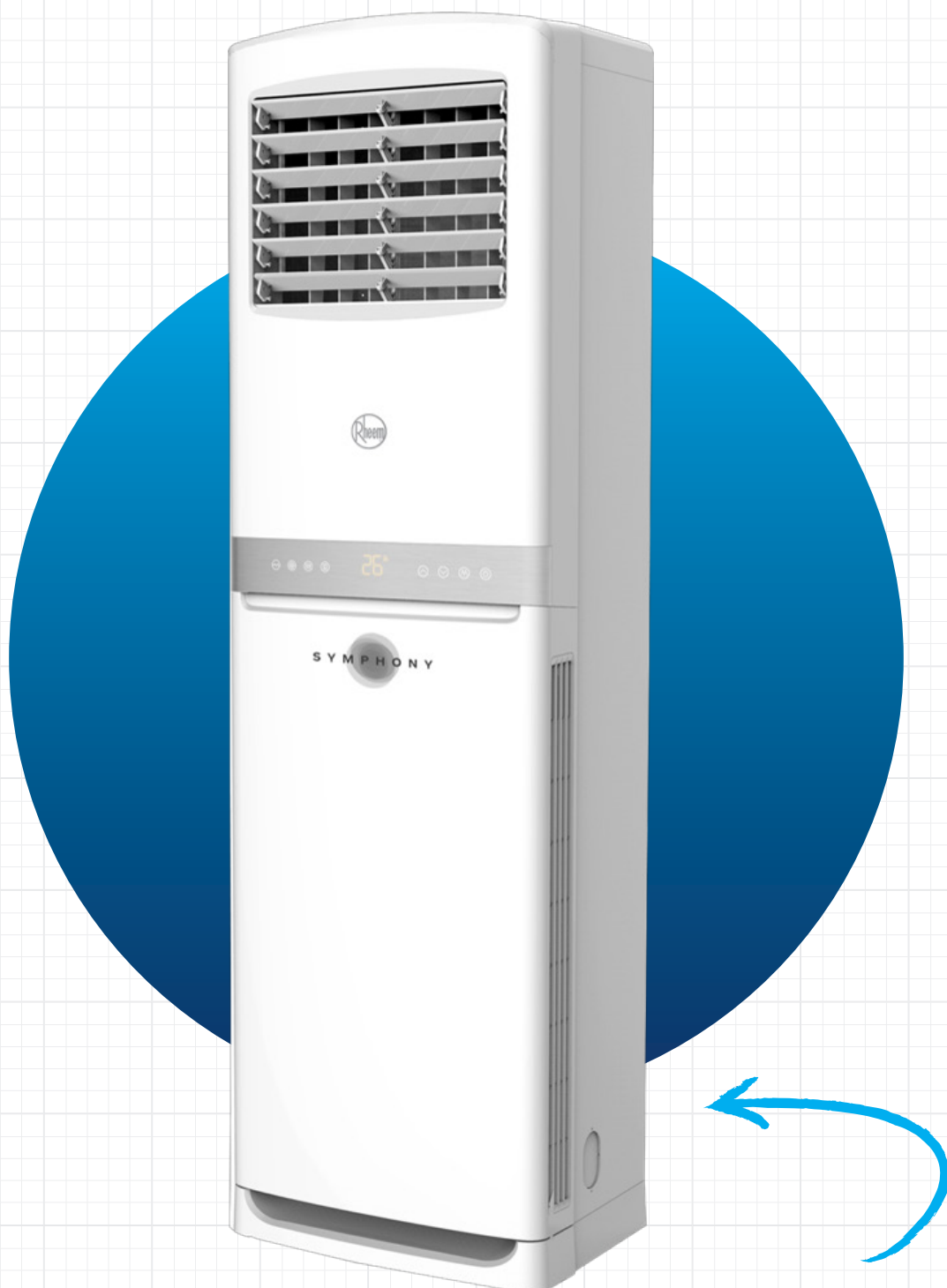
✓ Simulation Technology

Via analysing piping stress distribution, piping amplitude and displacement in transportation and operation, the reliability has been improved greatly.

Technical Table

| Indoor Model | RINC18CHA01 | RINC24CHA01 | RINC36CHA01 | RINC42CHA01 |
|---|--------------|--------------|--------------|--------------|
| Outdoor Model | RONC18CIHA01 | RONC24CIHA01 | RONC36CIHA01 | RONC42CIHA01 |
| T1 Rated Capacity (BTUH) | 17100 | 23000 | 32000 | 37000 |
| T1 Rated EER | 12.20 | 12.20 | 12.15 | 12.15 |
| T1 Rated Power (W) | 1402 | 1885 | 2634 | 3045 |
| T3 Rated Capacity (BTUH) | 15400 | 20200 | 28000 | 28600 |
| T3 Rated EER | 8.6 | 8.5 | 8.6 | 8.6 |
| T3 Rated Power (W) | 1791 | 2376 | 3256 | 3326 |
| Compressor Type | Inverter | Inverter | Inverter | Inverter |
| IDU Shipping Weight (kg) | 29.00 | 29.00 | 35.00 | 35.00 |
| ODU Shipping Weight (kg) | 44.00 | 46.00 | 66.00 | 104.00 |
| IDU Shipping Dimensions (H x L x W)(mm) | 310x910x910 | 310x910x910 | 350x910x910 | 350x910x910 |
| ODU Shipping Dimensions (H x L x W)(mm) | 770x1020x430 | 770x1020x430 | 895x1105x495 | 895x1105x495 |
| Refrigerant Connections (mm) - Liquid | 6.35 | 9.52 | 9.52 | 9.52 |
| Refrigerant Connections (mm) - Vapor | 12.70 | 15.88 | 15.88 | 19.05 |

RF Floor Standing



**4D BLADES FOR
BALANCED AIRFLOW.**

Features

✓ Big Size

Larger size, greater cooling capacity - effortlessly control the temperature for lasting comfort, even on the hottest days.

✓ Strong Air Outlet

Stronger air flow with stable operation in high temperatures and long distance outlet.

✓ Golden Fin

The golden hydrophilic fin can improve the heating efficiency by accelerating the defrosting process. The unique anticorrosive golden coating on the condenser can withstand rain, salty air and other corrosive elements.

✓ 4D Air Flow

Air blades can swing vertically and horizontally, which helps to improve air distribution and flow.

✓ Multiple Fan Speed

Equipped with high efficiency PG motor, from low to turbo, the user can choose desired air flow according to personal preference.

✓ Long-Distance Air Flow

The air flow distance can reach 18m.

Technical Table

| | |
|---|-----------------|
| Indoor Model | RF48CICA00 |
| Indoor Model | RINF48CCA00 |
| Outdoor Model | RONF48CICA00 |
| T1 Rated Capacity (BTUH) | 41200 |
| T1 Rated EER | 12.25 |
| T1 Rated Power (W) | 3360 |
| T3 Rated Capacity (BTUH) | 33400 |
| T3 Rated EER | 8.8 |
| T3 Rated Power (W) | 3800 |
| Compressor Type | Inverter Rotary |
| IDU Shipping Weight (kg) | 56 |
| ODU Shipping Weight (kg) | 87 |
| IDU Shipping Dimensions (H x L x W)(mm) | 2100x690x565 |
| ODU Shipping Dimensions (H x L x W)(mm) | 1435x1070x450 |
| Refrigerant Connections (mm) - Liquid | 6.35 |
| Refrigerant Connections (mm) - Vapor | 9.52 |

RVRL-RIRL



**LONG-TERM
FILTER: CLEANER
AIR, LESS UPKEEP.**

Features

✓ Fast Cooling/Heating

High-frequency startup boosts cooling and heating capacity, reducing the time needed to reach your desired temperature, so you can enjoy comfort in seconds.

✓ Silent

When the unit enters silent mode, the indoor fan runs at super breeze speed, keeping noise levels extremely low.

✓ Long-Term Filter

The latest long-term filter improves air quality while reducing cleaning frequency and making maintenance easier.

✓ Multiple Protection

Includes multiple protections from: high/low pressure, compressor overload, high temperature, phase loss/reverse, overheating, anti-freezing, sensor failure alarm, and failure code display. Ensures the compressor runs within a safe operating range.

✓ No Frosting Chassis

The unique pipeline design raises the chassis temperature higher than standard units, preventing the buildup of defrost water and improving heat management.

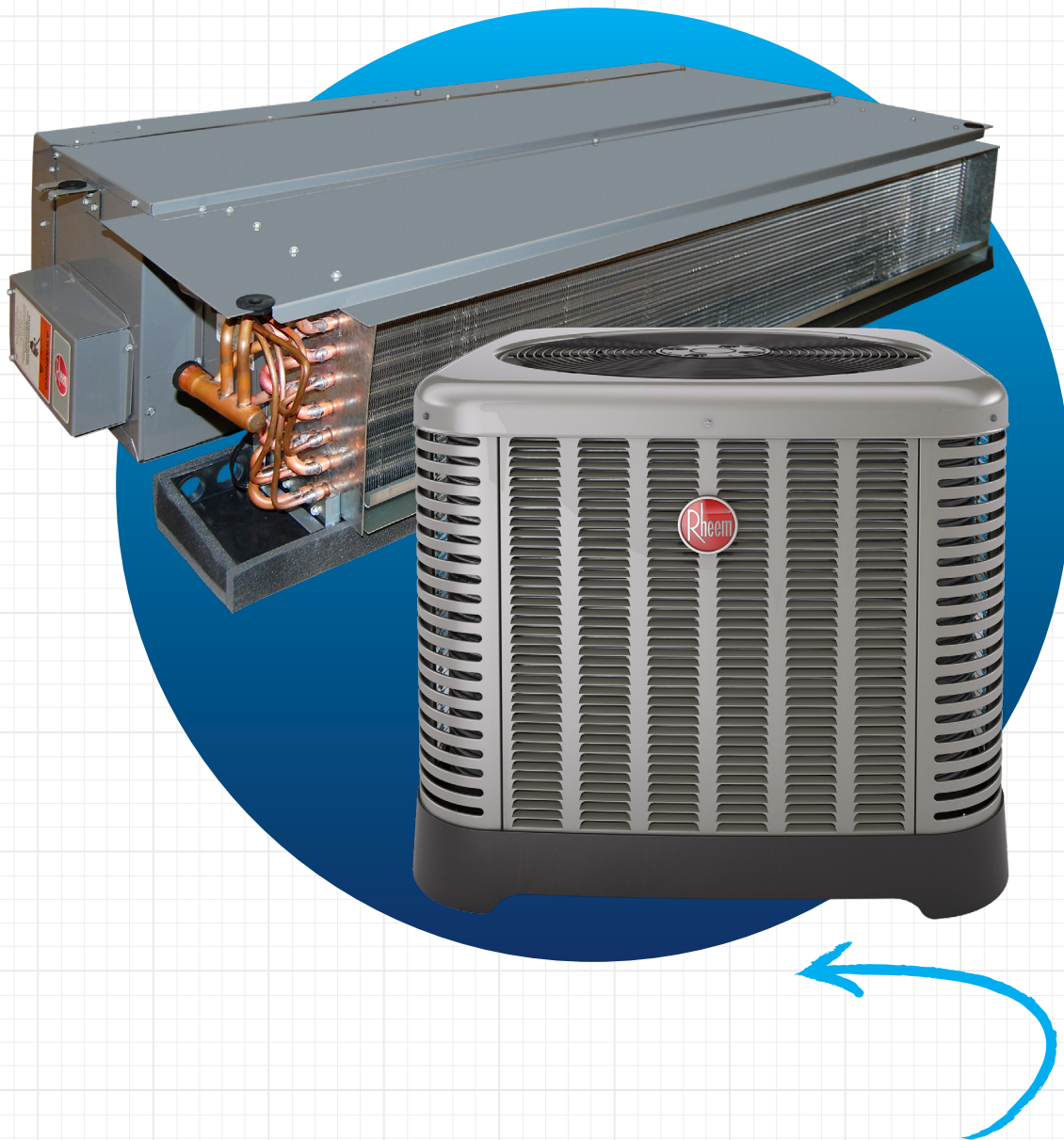
✓ Slim Design Feature

Can easily be installed in limited ceiling space.

Technical Table

| Indoor Model | RIRL-018JH00-S | RIRL-024JH00-S | RIRL-030JH00-S | RIRL-036JH00-S | RIRL-048JH00-S | RIRL-060JH00-S |
|--|-----------------|-----------------|-----------------|-----------------|-----------------|-----------------|
| Outdoor Model | RVRL-018JHB00-S | RVRL-024JHB00-S | RVRL-030JHB00-S | RVRL-036JHB00-S | RVRL-048JHB00-S | RVRL-060JHB00-S |
| T1 Rated Capacity (BTUH) | 17400.00 | 23100.00 | 28000.00 | 32000.00 | 45000.00 | 52000.00 |
| T1 Rated EER | 12.20 | 12.20 | 12.20 | 12.15 | 12.15 | 12.15 |
| T1 Rated Power (kW) | 1.43 | 1.89 | 2.30 | 2.63 | 3.70 | 4.28 |
| T3 Rated Capacity (BTUH) | 16000.00 | 21100.00 | 27000.00 | 30000.00 | 42000.00 | 47000.00 |
| T3 Rated EER | 8.60 | 8.50 | 8.60 | 8.60 | 8.70 | 8.60 |
| T3 Rated Power (kW) | 1.86 | 2.48 | 3.14 | 3.49 | 4.83 | 5.47 |
| Compressor Type | Inverter Rotary | Inverter Rotary | Inverter Rotary | Inverter Rotary | Inverter Rotary | Inverter Rotary |
| IDU Shipping Weight (kg) | 36 | 36 | 54 | 54 | 63 | 63 |
| ODU Shipping Weight (kg) | 44 | 46 | 56 | 66 | 104 | 114 |
| Net Dimensions of Indoor (W x D x H) (mm) | 1230x830x300 | 1230x830x300 | 1430x800x390 | 1430x800x390 | 1580x880x450 | 1580x880x450 |
| Net Dimensions of Outdoor (W x D x H) (mm) | 1020x430x770 | 1020x430x770 | 1020x430x770 | 1105x495x895 | 1080x430x1440 | 1080x460x1490 |
| Refrigerant Connections (mm) - Liquid | Φ 6.35 | Φ 9.52 | Φ 9.52 | Φ 9.52 | Φ 9.52 | Φ 9.5 |
| Refrigerant Connections (mm) - Vapor | Φ 12.7 | Φ 15.88 | Φ 15.88 | Φ 19.05 | Φ 19.05 | Φ 19.05 |

EL3T + EA14



***SAVES TIME WITH EASY
SERVICING ACCESS.***

Features

✓ Durability

1008 hrs salt spray tested cabinet as per ASTM-B117 standard, ensuring longer life of the unit and no corrosion of the panels.

✓ Reliability

High and low pressure switches are standard on all models, enhancing compressor and system reliability.

✓ High-Performance

Rheem's signature metallic louver guard design reduces coil clogging, ensuring consistent unit performance in various conditions.

✓ Ease of Installation

Soldered-type refrigerant connections are located close to the ground and outside of the unit for ease of installation and system monitoring at times of service.

✓ Ease of Serviceability

Easy-access drain pan and removable blower motor assembly save time during indoor unit servicing.

✓ Single-Row Condenser Coil

This makes the unit lighter and allows thorough coil cleaning to maintain "out of the box" performance.

Technical Table

| Indoor Model | EL3T1812 | EL3T2212 | EL3T2812 | EL3T3212 | EL3T4817 | EL3T5517 | EL3T6518STAC JA030 |
|---|-------------|-------------|--------------|--------------|--------------|--------------|-----------------------|
| Outdoor Model | EA1418 | EA1424 | EA1430 | EA1436 | EA1448 | EA1455 | EA1465 |
| T1 Rated Capacity (BTUH) | 17000 | 22000 | 26400 | 32000 | 48000 | 52000 | 62000 |
| T1 Rated EER | 12.15 | 11.85 | 11.80 | 11.85 | 12.8 | 11.8 | 12.1 |
| T1 Rated Power (W) | 1400 | 1855 | 2240 | 2700 | 3725 | 4300 | 5130 |
| T3 Rated Capacity (BTUH) | 15500 | 19600 | 23200 | 28000 | 41600 | 47000 | 56400 |
| T3 Rated EER | 8.90 | 8.30 | 8.30 | 8.30 | 9.05 | 8.45 | 8.90 |
| T3 Rated Power (W) | 1700 | 2350 | 2740 | 3350 | 4600 | 5325 | 6310 |
| Compressor Type | Scroll | Scroll | Scroll | Scroll | Scroll | Scroll | Scroll |
| IDU Shipping Weight (kg) | 38.38 | 38.38 | 47.45 | 47.45 | 70.3 | 70.3 | 83.6 |
| ODU Shipping Weight (kg) | 65 | 67 | 72 | 81 | 103 | 119 | 119 |
| IDU Shipping Dimensions (H x L x W)(mm) | 265*620*940 | 265*620*940 | 265*243*1245 | 265*243*1245 | 408*747*1530 | 408*747*1530 | 421*747*1564 |
| ODU Shipping Dimensions (H x L x W)(mm) | 679*822*822 | 679*822*822 | 730*822*822 | 730*924*924 | 932*975*975 | 1340*975*975 | 1340*975*975 |
| Refrigerant Connections (mm) - Liquid | 3/8" | 3/8" | 3/8" | 3/8" | 3/8" | 3/8" | 3/8" |
| Refrigerant Connections (mm) - Vapor | 3/4" | 3/4" | 3/4" | 3/4" | 7/8" | 7/8" | 7/8" |

SSGN + SPRL



**PRECISION MOTOR
MOUNTS FOR
STABILITY AND LOW
VIBRATION.**

Features

✓ Painted Cabinet

Durable, electrostatic powder-coated cabinet made from heavy-gauge galvanised steel, tested for 1008 hours of corrosion resistance per ASTM-B117 standards.

✓ Painted Drain Pan

Insulated, powder-coated galvanised steel drain pan with proper slope ensures efficient condensate drainage.

✓ Axial Condenser Fan

The combination of an external rotor motor and axial fan, on rubber isolators, with a properly dynamically balanced impeller, gives an efficient, quiet and reliable operation.

✓ Service Friendly

The compressor and electrical box are housed in separate compartments, allowing easy access via the service panel.

✓ Vibration-Resistant Motor Alignment

Specially designed motor mounts ensure precise alignment with the fan blower and housing, providing maximum stability and vibration resistance.

✓ Quiet Operation with Low RPM Design

The motor and fans are optimised to run at lower RPM, reducing tip speed for ultra-quiet operation.

Technical Table

| Indoor Model | SPRL-018JA | SPRL-024JA | SPRL-030JA | SPRL-036JA | SPRL-042JA | SPRL-048JA | SPRL-060JA |
|--|---------------|---------------|---------------|---------------|---------------|---------------|---------------|
| Outdoor Model | SSGN-018JA011 | SSGN-024JA011 | SSGN-030JA011 | SSGN-036JA011 | SSGN-042VA011 | SSGN-048VA011 | SSGN-060VA011 |
| T1 Rated Capacity (BTUH) | 18500 | 21600 | 29200 | 33000 | 39800 | 46800 | 54600 |
| T1 Rated EER | 12.35 | 12.00 | 12.70 | 12.00 | 12.00 | 12.05 | 12.40 |
| T1 Rated Power (kW) | 1.50 | 1.80 | 2.30 | 2.75 | 3.31 | 3.89 | 4.40 |
| T3 Rated Capacity (BTUH) | 17500 | 19200 | 27800 | 30600 | 36600 | 43200 | 50200 |
| T3 Rated EER | 9.70 | 8.95 | 10.30 | 9.55 | 9.10 | 9.20 | 9.55 |
| T3 Rated Power (kW) | 1.80 | 2.15 | 2.70 | 3.20 | 4.03 | 4.70 | 5.25 |
| Compressor Type | Rotary | Rotary | Scroll | Scroll | Scroll | Scroll | Scroll |
| Outdoor Unit Shipping Weight (kg) | 145.20 | 149.60 | 156.20 | 204.60 | 224.40 | 231.00 | 294.80 |
| Outdoor Unit Net Dimensions (H x L x W) (mm) | 350x1152x615 | 350x1152x615 | 350x1152x615 | 368x1633x850 | 368x1633x850 | 437x1633x850 | 437x1633x850 |
| Indoor Unit Net Dimensions (H x L x W) (mm) | 794x984x382 | 794x984x382 | 794x984x382 | 794x984x382 | 1104x1093x388 | 1104x1093x388 | 1418x1081x430 |
| Refrigerant Connections (mm) - Liquid | 3/8" | 3/8" | 3/8" | 3/8" | 3/8" | 3/8" | 3/8" |
| Refrigerant Connections (mm) - Vapor | 5/8" | 5/8" | 3/4" | 3/4" | 3/4" | 3/4" | 3/4" |

SSPM



**ELEVATED BASE FOR
MOISTURE PROTECTION
AND AIRFLOW.**

Features



Coil Protection

Full louver coil protection protects the unit from vandalism and weather extremes.



Electrical Protection

The transformer is protected by an in-line fuse which protects the transformer during the low-voltage electrical short.



Access Panel for Improved Indoor Air Quality

A small side panel grants access to a removable, sloped drain pan, which helps to ensure indoor air quality (IAQ) throughout the life of the unit. A 3/4" drain trap assembly is provided for convenience.



Enhanced Base Protection

Base rails elevate the unit, protecting it from ground moisture and allowing air circulation underneath.



Reliability

Rheem uses 100% scroll compressor technology on all package platforms. With many years of history, the scroll compressor has proven to be reliable, efficient, and quiet during operation.



Environment Friendly

Rheem SSPM Package Unit uses eco-friendly R410 refrigerant with zero ODP.

Technical Table

| Outdoor Model | SSPM-B036 | SSPM-B048 | SSPM-B060 |
|--------------------------|-----------|-----------|-----------|
| T1 Rated Capacity (BTUH) | 34200 | 46000 | 57000 |
| T1 Rated EER | 11.55 | 11.50 | 11.50 |
| T1 Rated Power (W) | 2940 | 4000 | 4950 |
| T3 Rated Capacity (BTUH) | 30000 | 40000 | 50800 |
| T3 Rated EER | 8.3 | 8.3 | 8.3 |
| T3 Rated Power (W) | 3620 | 4700 | 6140 |
| Compressor No./Type | 1/Scroll | 1/Scroll | 1/Scroll |
| Shipping Weight (kg) | 151 | 170 | 176 |

EMRHR (5TR to 10TR)



***DESIGNED FOR
EASY TECHNICIAN
ACCESS.***

Features

✓ TXV Expansion Valve

TXV valves enhance cooling in high temperatures and protect the compressor from liquid damage.

✓ QWIK Slide Drain

Rheem's QWIK slide drain reduces the service time needed for the unit.

✓ Metallic Louver

Full metallic louver guard reduces coil clogging and prevents mechanical damage.

✓ Sturdy Cabinet

Pressed base, top, and side grilles enhance unit sturdiness.

✓ Ease of Serviceability

Keeping service technicians in mind, Rheem takes pride providing easy access to internal components.

✓ Painted Unit Cabinet

Pre-painted cabinet tested for 1008 hours in salt spray, ensuring durability in harsh weather.

Technical Table

| Outdoor Model | EMRHRX060AVT*** | EMRHRX066AVT*** | EMRHRX072AVT*** | EMRHRX096AVA*** | EMRHRX120AVA*** |
|--------------------------|-----------------|-----------------|-----------------|-----------------|-----------------|
| T1 Rated Capacity (BTUH) | 57000 | 65000 | 68000 | 90000 | 115000 |
| T1 Rated EER | 11.50 | 11.20 | 11.20 | 11.20 | 11.20 |
| T1 Rated Power (W) | 4957 | 5804 | 6071 | 8036 | 10268 |
| T3 Rated Capacity (BTUH) | 53300 | 58000 | 60450 | 80000 | 102000 |
| T3 Rated EER | 8.3 | 8.3 | 8.3 | 7.7 | 8.3 |
| T3 Rated Power (W) | 6422 | 6988 | 7283 | 10390 | 12289 |
| Compressor No./Type | 1/Scroll | 1/Scroll | 1/Scroll | 1/Scroll | 1/Scroll |
| Shipping Weight (kg) | 176.90 | 176.90 | 176.90 | 447.70 | 447.70 |

EMRHR (12.5TR to 30TR)



**UP TO 40% LESS
REFRIGERANT USE.**

Features

✓ Painted Unit Cabinet

1008 hrs salt spray tested pre-painted cabinet ensuring unit's endurance on harsh weather conditions.

✓ Reliability

Stainless steel drain pan is provided as a standard feature with all the units to avoid corrosion and provide utmost quality to the user.

✓ High-Performance

High efficiency scroll compressors are used in Rheem package units to ensure high-performance throughout the year.

✓ Ease of Serviceability

The outdoor section top cover is easily removed and allows easy access to compressor, and outdoor fan motor.

✓ Continous Cooling in High Ambient

Designed and tested in USA specifically for Saudi Arabia climate condition, the system provides uninterrupted cooling even during extreme weather conditions. The unit continuously run even at 52°C ambient conditions.

✓ Less Refrigerant Usage

Microchannel condenser coils allow for more efficient heat transfer and reduce refrigerant usage by up to 40%.

Technical Table

| Outdoor Model | EMRHR-170 | EMRHR-240 | EMRHR-300 | EMRHR-360 |
|--------------------------|-----------|-----------|-----------|-----------|
| T1 Rated Capacity (BTUH) | 154000 | 200000 | 242000 | 302000 |
| T1 Rated EER | 11.00 | 11.00 | 10.50 | 10.00 |
| T1 Rated Power (W) | 14000 | 18181 | 23050 | 30200 |
| T3 Rated Capacity (BTUH) | 132000 | 174000 | 210000 | 258000 |
| T3 Rated EER | 8.00 | 8.00 | 8.00 | 7.00 |
| T3 Rated Power (W) | 16500 | 21750 | 26250 | 36857 |
| Compressor No./Type | 2/Scroll | 2/Scroll | 2/Scroll | 2/Scroll |
| Shipping Weight (kg) | 616.43 | 630.04 | 630.04 | 745.71 |

SAVR-D



**AUTOMATED SYSTEM
ENSURES OPTIMAL
REFRIGERANT
MANAGEMENT.**

Features

✓ All DC Inverter

New-generation DC inverter compressor offers high efficiency, large capacity, and a wide operating range. DC fan motor with optimised blades and wind scooper boosts airflow while minimising noise.

✓ Compressor Backup

If one compressor breaks down, the other compressor in the unit will continue to operate, ensuring continuous operation.

✓ High Efficiency Heat Exchanger

Optimised 2-to-1 refrigerant circuit design increases the heat exchanging efficiency and enhances the ratio of liquid which flow to the evaporator.

✓ Precise Refrigerant Control

Real-time monitoring of the discharge and suction pressure of the system. The output of compressors and the EXV open degree can be regulated precisely to optimise the compression ratio, ensuring the compression ratio is always in the safety zone.

✓ Dynamic Oil Return Control Technology

Monitors compressor status and runtime to calculate optimal oil return timing.

✓ Automatic Refrigerant Charge

During maintenance, refrigerant is efficiently recycled back into the outdoor units. The outdoor unit possesses the capability to dynamically adjust the refrigerant volume based on operational parameters. Additionally, it provides reminders to installation personnel, prompting them to halt the charging process. This automated system ensures optimal refrigerant management during maintenance activities.

Technical Table

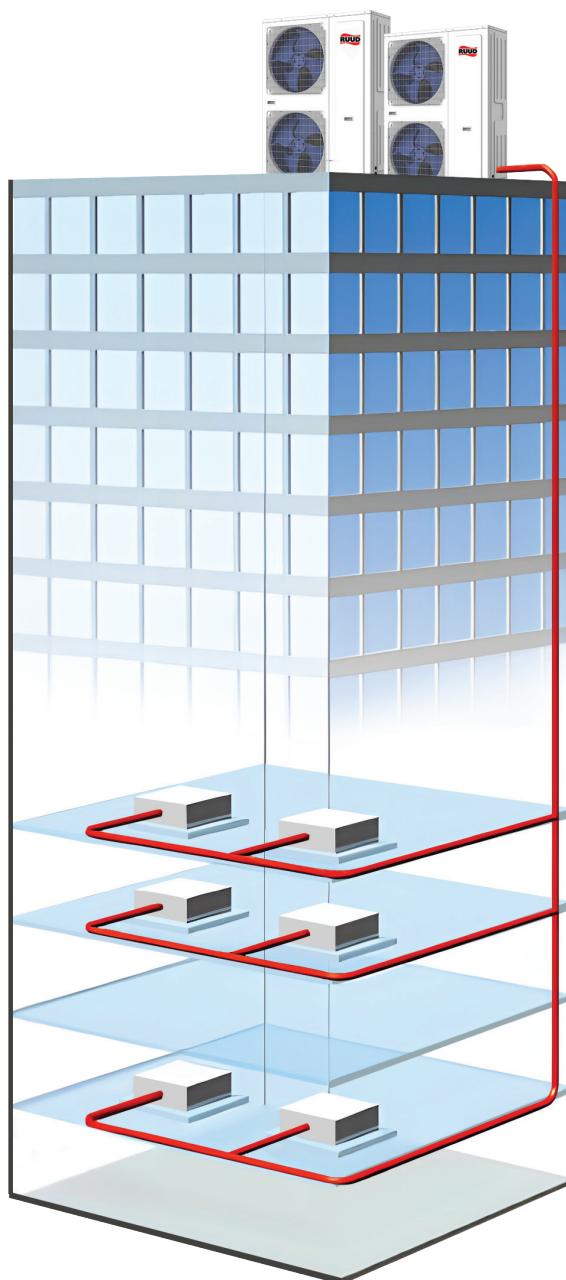
| Outdoor Model | SAVRH250/ 6R1MD | SAVRH280/ 6R1MD | SAVRH330/ 6R1MD | SAVRH400/ 6R1MD | SAVRH450/ 6R1MD | SAVRH500/ 6R1MD | SAVRH560/ 6R1MD | SAVRH610/ 6R1MD |
|---|--------------------|--------------------|--------------------|--------------------|--------------------|--------------------|--------------------|--------------------|
| T1 Rated Capacity (BTUH) | 86000 | 95000 | 114000 | 136000 | 154000 | 170000 | 192000 | 210000 |
| T1 Rated EER | 14.35 | 13.65 | 13.15 | 12.80 | 11.80 | 12.45 | 11.80 | 11.25 |
| T1 Rated Power (W) | 5.99 | 6.98 | 8.62 | 10.67 | 13.04 | 13.7 | 16.14 | 18.64 |
| T3 Rated Capacity (BTUH) | 76000 | 85000 | 100000 | 114000 | 127000 | 144000 | 150000 | 156000 |
| T3 Rated EER | 10.05 | 9.40 | 9.75 | 9.90 | 9.20 | 9.50 | 8.85 | 8.55 |
| T3 Rated Power (W) | 7.55 | 9.02 | 10.24 | 11.62 | 13.73 | 15.73 | 17.05 | 18.40 |
| Compressor Type | DC INVERTER | DC INVERTER | DC INVERTER | DC INVERTER | DC INVERTER | DC INVERTER | DC INVERTER | DC INVERTER |
| Shipping Weight - kg | 225 | 225 | 240 | 280 | 280 | 345 | 345 | 345 |
| Shipping Dimensions (H x L x W) (mm) | 1865x1030x825 | 825x1030x1865 | 825x1030x1865 | 825x1030x1865 | 825x1030x1865 | 825x1030x1865 | 825x1030x1865 | 825x1030x1865 |
| Net Dimensions (H x L x W)(mm) | 1635x765x990 | 990x765x1635 | 990x765x1635 | 990x765x1635 | 765x1340x1635 | 765x1340x1635 | 765x1340x1635 | 765x1340x1635 |

| Outdoor Model | SAVRH680/ 6R1MD | SAVRH730/ 6R1MD | SAVRH785/ 6R1MD | SAVRH850/ 6R1MD | SAVRH900/ 6R1MD | SAVRH950/ 6R1MD | SAVRH1010/ 6R1MD |
|---|--------------------|--------------------|--------------------|--------------------|--------------------|--------------------|---------------------|
| T1 Rated Capacity (BTUH) | 228000 | 250000 | 268000 | 290000 | 308000 | 324000 | 344000 |
| T1 Rated EER | 11.75 | 10.80 | 10.40 | 10.25 | 10.20 | 10.05 | 10.00 |
| T1 Rated Power (W) | 19.42 | 23.17 | 25.74 | 28.33 | 30.20 | 32.20 | 34.47 |
| T3 Rated Capacity (BTUH) | 178000 | 194000 | 208000 | 216000 | 222000 | 230000 | 244000 |
| T3 Rated EER | 8.90 | 8.70 | 8.50 | 8.45 | 8.35 | 8.25 | 8.20 |
| T3 Rated Power (W) | 20.00 | 22.35 | 24.40 | 25.6 | 26.53 | 27.89 | 29.79 |
| Compressor Type | DC INVERTER | DC INVERTER | DC INVERTER | DC INVERTER | DC INVERTER | DC INVERTER | DC INVERTER |
| Shipping Weight - kg | 411 | 411 | 411 | 445 | 445 | 453 | 453 |
| Shipping Dimensions (H x L x W) (mm) | 1930x1925x930 | 1930x1925x930 | 1930x1925x930 | 1930x1925x930 | 1930x1925x930 | 1930x1925x930 | 1930x1925x930 |
| Net Dimensions (H x L x W)(mm) | 1760x1850x825 | 1760x1850x825 | 1760x1850x825 | 1760x1850x825 | 1760x1850x825 | 1760x1850x825 | 1760x1850x825 |



Key Benefit

Coupling DC inverter control technology with sub-cooling circuit technology means that a system with longer piping can be achieved. This pairing also results in a simplified design and installation process.



1000m

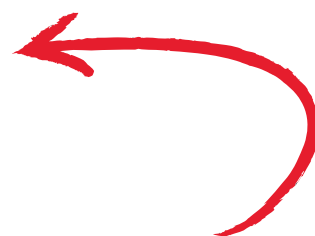
Total piping length

200m

Longest pipe length

| Max. total piping length | Max. piping length between ODU and farthest IDU | Max. piping length from first indoor branch to the farthest IDU | Max. level difference between IDU | Max. level difference between ODU and IDU units |
|--------------------------|---|---|-----------------------------------|---|
| 1000m | 200m | 40m/90m* | 30m | 110m/130m |

Water Heating System



***NEXT-GENERATION
WATER HEATING
SOLUTIONS.***

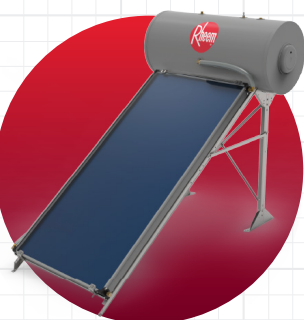
Residential Water Heating



Proterra Hybrid
Heat Pump



Fury Electric



Solar
Thermosiphon



Point
of Use

Commercial Water Heating



E-Series



EVR-Series

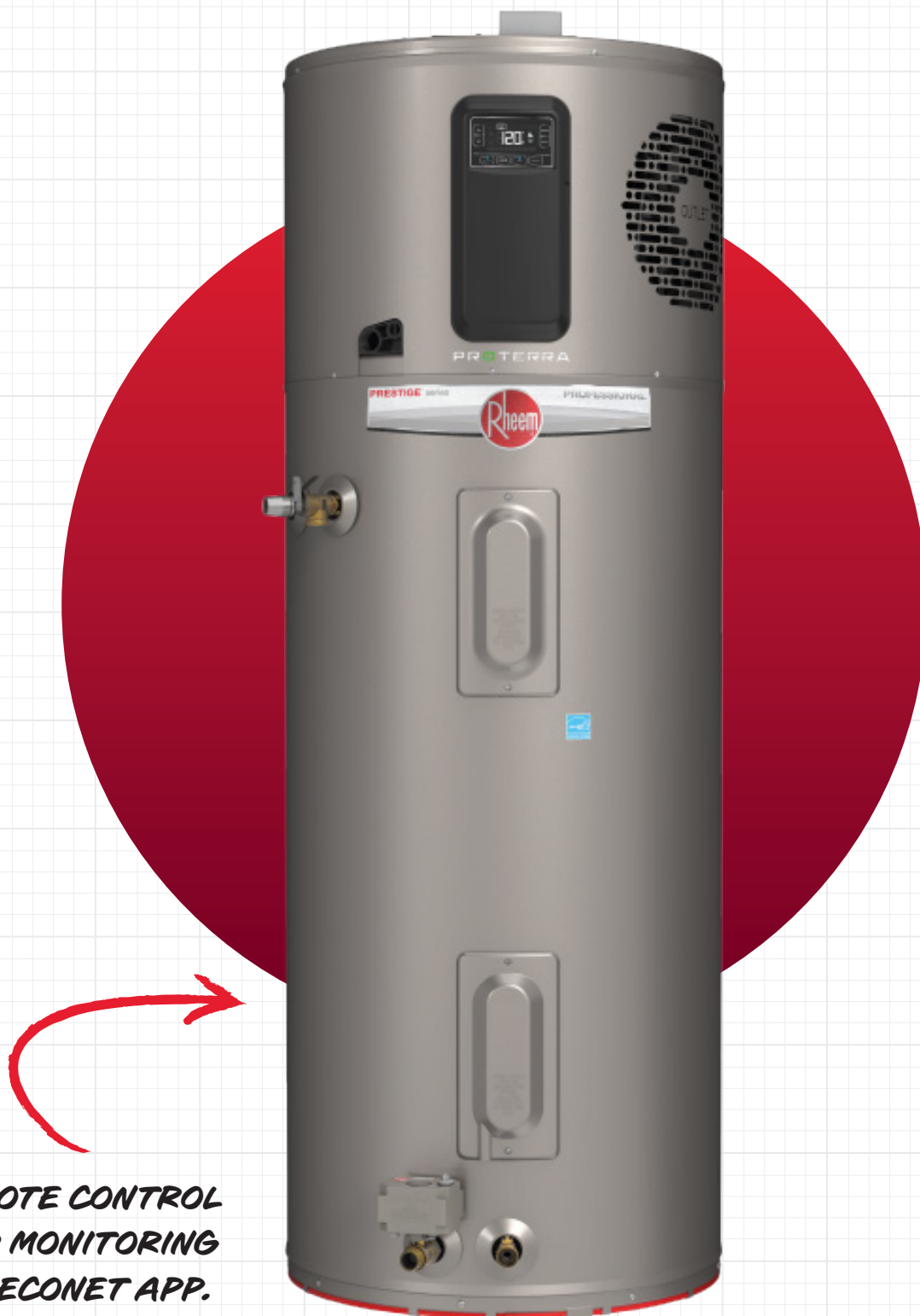


A2W & W2W
Heat Pump



RHC
Calorifiers

Proterra Hybrid Heat Pump



**REMOTE CONTROL
AND MONITORING
VIA ECONET APP.**

Features

✓ Performance Rating Specifications

The unit is rated for varied ambient temperatures up to 62°C.

✓ Duct-Ready Design

The new design of Proterra means ducts can be easily installed without any additional accessories.

✓ Universal Connection

Top and side pipe connections on the same unit, keeping in mind ease of installation for both retrofit and new projects.

✓ LeakSense & LeakGuard

Inbuilt LeakSense detects water leaks in the installation area, while the LeakGuard automatic shutoff valve stops water flow to the heaters.

✓ EcoNet App

Enables convenient remote control and monitoring of your water heater via the Econet app.

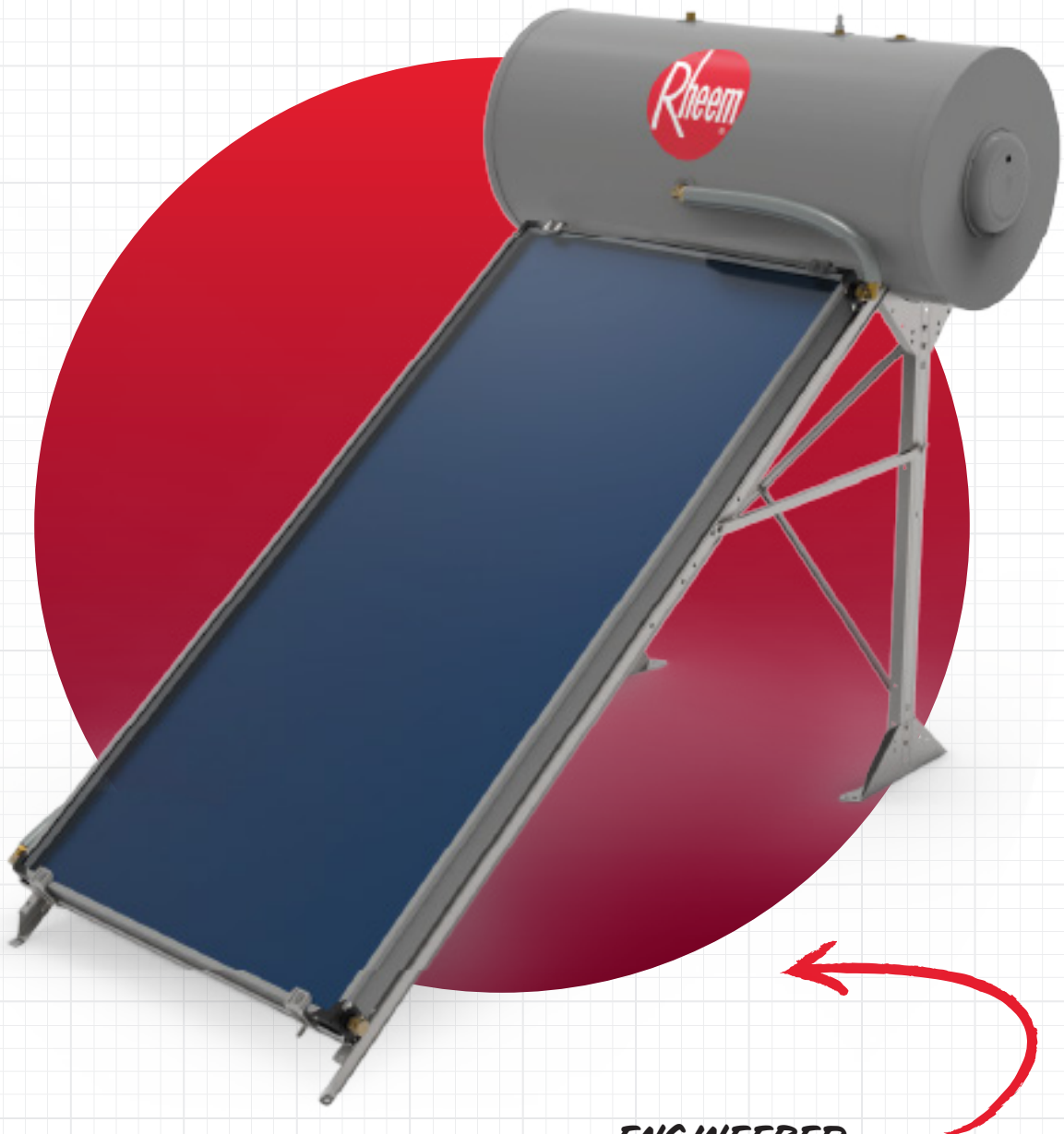
✓ SASO certified HP

All Proterra units are SASO certified.

Technical Table

| Model | Nominal Capacity (Gal) | Heating Element Power (kW) | Load Profile | SASO Energy Efficiency Grade |
|---------|------------------------|----------------------------|--------------|------------------------------|
| PROPH50 | 50 | 4.5 | XL | A |
| PROPH80 | 80 | 4.5 | 2XL | B |

Solar Thermosiphon



**ENGINEERED
FOR ENERGY
EFFICIENCY AND
POWER SAVINGS.**

Features



Installation

The sturdy design allows for seamless installation in low-height configurations, ensuring durability and optimal performance.



Sustainable Energy Savings

Our solar water heater is engineered for optimal energy efficiency, providing substantial power savings with every use, while promoting sustainable energy consumption.



Capacity

Available in 200L and 300L capacities to meet diverse needs.



Durability

Provides reliable, long-lasting performance even in the toughest weather conditions.



Electric Back-Up Available

2 kW electrical element for nighttime hot water needs.



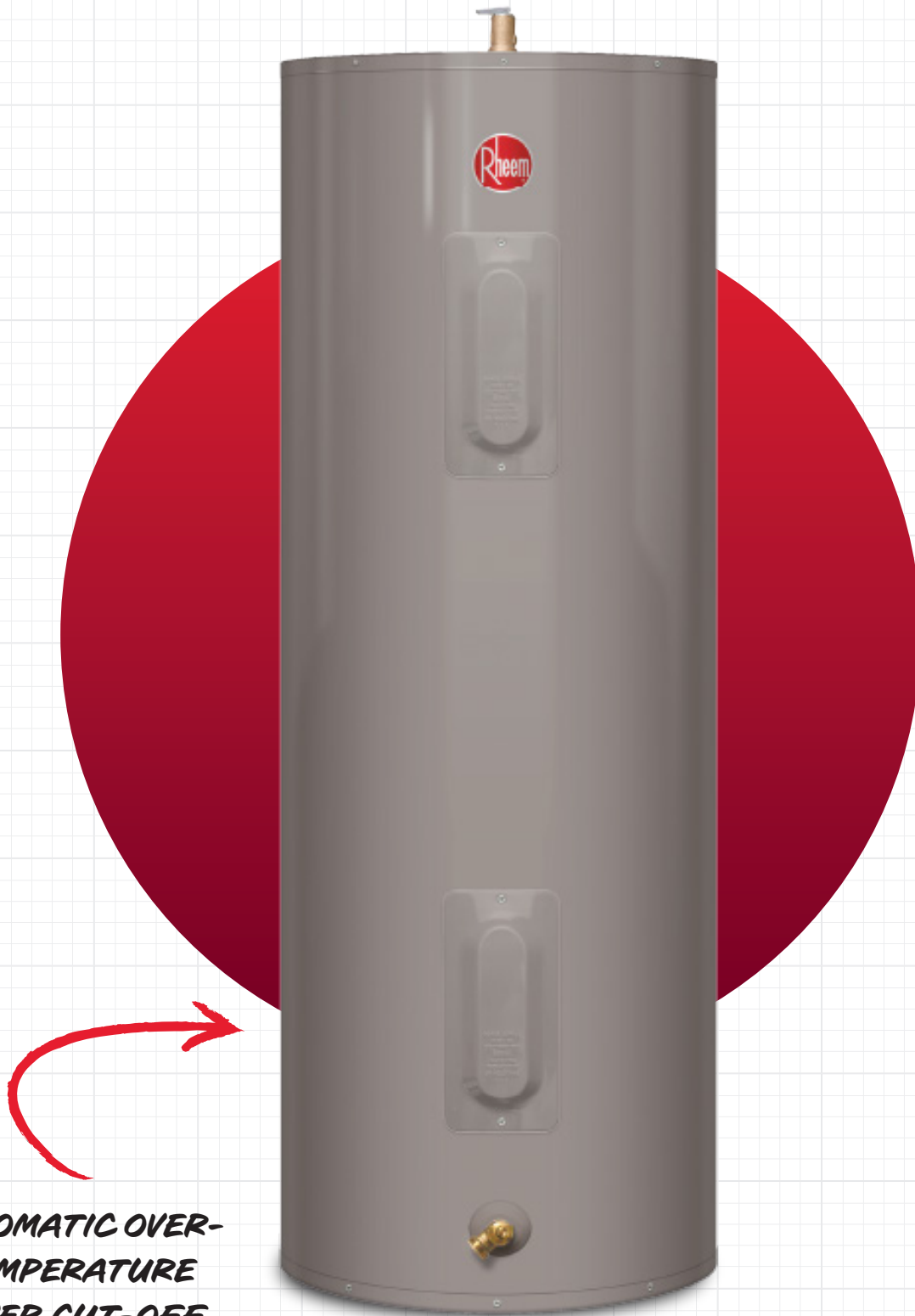
Thermal Efficiency

Delivers superior thermal performance, maximising heat retention for efficient hot water supply.

Technical Table

| Model | RHS200LC1-A20F21T11-2.0-S | RHS300LC2-A20F21T11-2.0-S |
|------------------------------|---------------------------|---------------------------|
| Nominal Capacity (L) | 200 | 300 |
| Heating Element Power (kW) | 2.0 | 2.0 |
| Load Profile | L | L |
| SASO Energy Efficiency Grade | C | C |
| No. of Collectors | 1 | 2 |
| Total Collector Area | 1.88 | 3.76 |

Fury Electric



**AUTOMATIC OVER-
TEMPERATURE
POWER CUT-OFF.**

Features

- ✓

UL listed

Rheem’s central water heaters is UL listed. This certification guarantees high quality and reliable operation for residential and commercial use.
- ✓

American Design™

The Fury water heater features an innovative American design, offering superior durability and efficiency.
- ✓

Tank Technology

The Fury water heater is equipped with EverKleen™ technology, which helps prevent sediment buildup for long-lasting performance. This self-cleaning feature ensures optimal efficiency and extends the lifespan of the water heater.
- ✓

Efficient Performance

The Fury water heater delivers high-performance while maintaining low operating costs, ensuring reliable hot water with minimal energy consumption, saving both time and money.
- ✓

Safety

Over-temperature protection automatically cuts off power in case of excessive heat.
- ✓

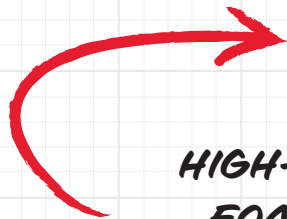
Rheemglas® tank

The Rheemglas® tank, rated for 10 bars and factory tested for 20 bars, features a durable glass lining for enhanced corrosion resistance and long-lasting performance.

Technical Table

| Model | 82V30-2 | 82V40-2 | 82V52-2 | 82MV52-2 | 82V80-2 | 82V120-2 |
|----------------------------|---------|---------|---------|----------|---------|----------|
| Nominal Capacity (Gal) | 30 | 40 | 50 | 50 | 80 | 120 |
| Heating Element Power (kW) | 9.00 | 6.00 | 4.50 | 4.50 | 4.50 | 6.00 |
| Load Profile | XL | XL | L | L | 2XL | 3XL |
| Tank Height (Inch) | 45.75 | 46.50 | 57.00 | 46.00 | 59.00 | 62.50 |
| Tank Diameter (Inch) | 17.75 | 19.75 | 19.00 | 21.75 | 23.00 | 28.25 |
| Shipping Weight (kg) | 32.29 | 43.09 | 48.53 | 53.07 | 53.07 | 146.96 |

Point of Use



**HIGH-PERFORMANCE
FOAM INSULATION
FOR SUPERIOR HEAT
RETENTION.**

Features

- UL listed**

Rheem’s central water heaters is UL listed. This certification guarantees high quality and reliable operation for residential use.
- Versatile**

Wall-mount design available in horizontal and vertical installation.
- Durability**

Rheem’s exclusive magnesium anode rod ensures long-lasting tank protection.
- Efficient Performance**

High-performance foam insulation ensures superior heat retention for maximum energy efficiency.
- Safety**

Over-temperature protection automatically cuts off power in case of excessive heat.
- Rheemglas® Tank**

The Rheemglas® tank, rated for 10 bars and factory tested for 20 bars, features a durable glass lining for enhanced corrosion resistance and long-lasting performance.

Technical Table

| VERTICAL UL POU | Model | 85VP10-1 | 85VP15-1 | 85VP20-1 | 85VP30-1 | 85VP30-1 | 85VP30-1 |
|-------------------|----------------------------|----------|----------|----------|----------|----------|----------|
| | Nominal Capacity (Gal) | 10 | 15 | 20 | 30 | 30 | 30 |
| | Heating Element Power (kW) | 1.50 | 2.00 | 3.00 | 3.00 | 4.50 | 6.00 |
| | Load Profile | S | M | M | L | L | XL |
| | Tank Height (Inch) | 23.00 | 24.20 | 25.25 | 30.00 | 30.00 | 30.00 |
| | Tank Diameter (Inch) | 15.75 | 17.75 | 19.75 | 21.75 | 21.75 | 21.75 |
| | Shipping Weight (kg) | 20.87 | 24.49 | 31.30 | 41.28 | 41.28 | 41.28 |
| HORIZONTAL UL POU | Model | EP15H | EP15H | EP20H | EP20H | EP30H | |
| | Nominal Capacity (Gal) | 15 | 15 | 20 | 20 | 30 | |
| | Heating Element Power (kW) | 1.50 | 3.00 | 3.00 | 4.50 | 4.50 | |
| | Load Profile | M | M | M | M | L | |
| | Tank Height (Inch) | 635 | 635 | 813 | 813 | 1118 | |
| | Tank Diameter (Inch) | 437 | 437 | 437 | 437 | 437 | |
| | Shipping Weight (kg) | 26 | 26 | 29 | 29 | 37 | |

E-Series



**BUILT WITH
LIFEGUARD STAINLESS
STEEL FOR LASTING
RELIABILITY.**

Features

✓ Reliability

Constructed with Lifeguard stainless steel for enhanced durability and resistance to corrosion.

✓ Efficiency

98% thermal efficiency with thick foam insulation for minimal standby heat loss.

✓ Easy Installation & Service

Control box is located at the front of unit for easy wiring during installation, multiple knockout holes accommodate a variety of conduit sizes.

✓ System Sentinel Diagnostic Panel

Features the System Sentinel, a diagnostic panel equipped with LEDs indicating the number, location, and status of each heating element.

✓ Input Capacity

Offers versatile input options ranging from 3 to 108 KW to suit various operational needs.

✓ Thick Foam Insulation

Equipped with thick foam insulation to minimise standby heat loss, ensuring energy efficiency.

Technical Table

| Model | E120 | E175 |
|------------------------------|--------|--------|
| Nominal Capacity (Gal) | 120 | 175 |
| Heating Element Power (kW) | 15.0 | 36.0 |
| Load Profile | 3XL | 3XL |
| SASO Energy Efficiency Grade | 58.75 | 72.5 |
| No. of Collectors | 36.0 | 38.5 |
| Shipping Weight (kg) | 208.65 | 317.52 |

EVR-Series



**INCOLOY 825
HEATING ELEMENTS
FOR DURABILITY.**

Features



Reliability

Available with working pressure ratings of 8 and 10 bar, offering flexibility for different operational needs.



Incoloy 825 Heating Elements

Features durable Incoloy 825 heating elements, designed for long-lasting performance in demanding conditions.



Durability

Rheem's exclusive magnesium anode rod ensures long-lasting tank protection.



UL Listed

Certified with UL design, ensuring adherence to safety and performance standards.



Safety

ASME Temperature & Pressure Relief Valve, factory-installed gauges, and heating capacities ranging from 75 to 450 kW.



Longer Life

Available in robust glasslined steel or premium Stainless Steel 316, offering superior corrosion resistance for long-lasting performance.

Technical Table




| GLASS LINED RANGE | Model No. | Nominal Capacity (G) | kW Range | Tank Height (mm) | Tank Diameter (mm) | Tank Diameter with Control Panel (mm) |
|-----------------------|----------------|----------------------|----------|------------------|--------------------|---------------------------------------|
| | RH-EVR-GL-200 | 200 | 75-135 | 1980 | 830 | 1220 |
| | RH-EVR-GL-210 | 200 | 75-135 | 1980 | 830 | 1220 |
| | RH-EVR-GL-250 | 250 | 75-135 | 1885 | 980 | 1370 |
| | RH-EVR-GL-300 | 300 | 75-150 | 2188 | 980 | 1370 |
| | RH-EVR-GL-400 | 400 | 75-195 | 2036 | 1200 | 1590 |
| | RH-EVR-GL-500 | 500 | 75-195 | 2145 | 1300 | 1690 |
| | RH-EVR-GL-600 | 600 | 75-225 | 2485 | 1300 | 1690 |
| | RH-EVR-GL-700 | 700 | 75-225 | 2549 | 1300 | 1600 |
| | RH-EVR-GL-800 | 800 | 75-225 | 2629 | 1450 | 1900 |
| | RH-EVR-GL-1000 | 1000 | 75-360 | 2248 | 1800 | 2250 |
| | RH-EVR-GL-1200 | 1200 | 75-450 | 2588 | 1800 | 2250 |
| STAINLESS STEEL RANGE | Model No. | Nominal Capacity (G) | Max kW | Tank Height (mm) | Tank Diameter (mm) | Tank Diameter with Control Panel (mm) |
| | RH-EVR-SS-250 | 250 | 135 | 1885 | 980 | 1370 |
| | RH-EVR-SS-300 | 300 | 150 | 2188 | 980 | 1370 |
| | RH-EVR-SS-400 | 400 | 195 | 2036 | 1200 | 1590 |
| | RH-EVR-SS-500 | 500 | 195 | 2145 | 1300 | 1690 |
| | RH-EVR-SS-600 | 600 | 216 | 2485 | 1300 | 1690 |
| | RH-EVR-SS-700 | 700 | 216 | 2549 | 1300 | 1600 |
| | RH-EVR-SS-800 | 800 | 216 | 2629 | 1450 | 1900 |
| | RH-EVR-SS-1000 | 1000 | 360 | 2248 | 1800 | 2250 |
| | RH-EVR-SS-1200 | 1200 | 450 | 2588 | 1800 | 2250 |

A2W & W2W Heat Pump



**ADVANCED SAFETY
CONTROLS FOR
RELIABLE OPERATION.**

Features

- 
Rheem® IQ Intelligent Controller
 Maximises efficiency and user comfort through advanced monitoring and adaptive control algorithms.
- 
R134A Environment Refrigerant
 Ensures compliance with environmental regulations and sustainable cooling performance.
- 
Stucco Aluminium Finish
 Enhances both its aesthetic appeal and durability, ensuring resilience against environmental elements while maintaining a sleek appearance.
- 
Scroll Compressor
 Provides reliable and efficient cooling performance even in elevated temperature environments.
- 
Double Wall and Single Wall Copper Heat Exchanger
 Ensures efficient heat transfer and durability for reliable performance in heating and cooling applications.
- 
Advanced Safety Controls
 Features advanced safety controls, ensuring secure and reliable operation in all conditions.

Technical Table

| A2W Standard Model For 60Hz Market | Air to Water Heat Pump | | Heating Capacity (KW) | Power Input (rated) KW | Max Outlet Temperature | Dimensions (LxWxH) (mm) |
|------------------------------------|--------------------------|--|-----------------------|------------------------|------------------------|-------------------------|
| | RTHW075 DV-70V-1 | | 75 | 15.35 | 65 | 2180 x 1002 x 1326 |
| | RTHW113 DV-7QV-1 | | 113 | 20.04 | 65 | 2180 x 1134 x 1438 |
| | RTHW150 DV-70V-1 | | 150 | 31.11 | 65 | 2407 x 1258 x 1933 |
| | RTHW180 DV-7QV-1 | | 185 | 40.54 | 65 | 2217 x 1967 x 2282 |
| | RTHW220 DV-7QV-1 | | 225 | 50.26 | 65 | 3463 x 1963 x 2348 |
| W2W Standard Model For 60Hz Market | Water to Water Heat Pump | | | | | |
| | RTWW070 SDS-7Q-1 | | 70 | 14.22 | 70 | 2270 x 805 x 1000 |
| | RTWW106 SDS-7Q-1 | | 107 | 21.41 | 70 | 1650 x 1800 x 1200 |
| | RTWW140 SDS-7Q-1 | | 141 | 28.45 | 70 | 1650 x 1800 x 1200 |
| | RTWW175 SDS-7Q-1 | | 174 | 35.45 | 70 | 2200 x 2400 x 1204 |
| | BTWW210 SDS-70-1 | | 211 | 42.67 | 70 | 2200 x 2400 x 1270 |
| | RTWw980 SDS_70_1 | | 989 | 56.9 | 70 | 3450 x 2250 x 1250 |

RHC Calorifiers



**PVC OR ALUMINUM
CLADDING
OPTIONS.**

Features



Durable Construction

SS316L is material of construction for the tanks suitable for water conditions of GCC.



Large Storage Capacity

Capacities ranging from 300L to 30,000L.



Enhanced Protection with Ti Anodes

Special protection for tanks with non-consumable Ti anodes.



Reliability

Available with working pressure ratings of 8 and 10 bar, offering flexibility for different operational needs.



Various Options to Choose for Heat Exchanger

RHC tanks offer a choice of serpentine coil, U-tube bundle, or buffer tank configurations.



Versatile Installation

Available with external PVC covers or Aluminium cladding to suit different site conditions.

Technical Table

| RHC-1S | | | | | | | |
|-------------------------|------|------|------|------|------|------|------|
| Nominal Capacity (L) | 200 | 300 | 500 | 800 | 1000 | 1500 | 2000 |
| Heating Coil Power (kW) | 21 | 29 | 42 | 52 | 70 | 84 | 91 |
| Tank Length (mm) | 1290 | 1650 | 1740 | 1835 | 2085 | 2225 | 2315 |
| Tank Diameter (mm) | 610 | 610 | 760 | 970 | 970 | 1200 | 1400 |
| Shipping Weight (kg) | 125 | 134 | 186 | 277 | 331 | 398 | 471 |

| RHC-2S | | | | | | |
|-------------------------------|------|------|-----|------|------|------|
| Nominal Capacity (L) | 300 | 500 | 800 | 1000 | 1500 | 2000 |
| Upper Heating Coil Power (kW) | 17 | 29 | 200 | 42 | 49 | 56 |
| Lower Heating Coil Power (kW) | 50 | 53 | 200 | 89 | 133 | 149 |
| Tank Length (mm) | 1650 | 1740 | 200 | 2085 | 2225 | 2315 |
| Tank Diameter (mm) | 610 | 760 | 200 | 970 | 1200 | 1400 |
| Shipping Weight (kg) | 145 | 196 | 200 | 321 | 389 | 469 |

| RHC-1U | | | | | | | | | |
|-------------------------|------|------|------|------|------|------|------|------|------|
| Nominal Capacity (L) | 500 | 800 | 1000 | 1500 | 2000 | 2500 | 3000 | 4000 | 5000 |
| Heating Coil Power (kW) | 36 | 54 | 72 | 108 | 144 | 180 | 215 | 287 | 359 |
| Tank Length (mm) | 1844 | 1950 | 2200 | 2245 | 2184 | 2590 | 2790 | 2869 | 2960 |
| Tank Diameter (mm) | 810 | 1000 | 1000 | 1200 | 1400 | 1300 | 1350 | 1500 | 1700 |
| Shipping Weight (kg) | 105 | 155 | 170 | 240 | 295 | 365 | 405 | 580 | 640 |

| RHC-2U | | | | | | | |
|-------------------------------|------|------|-------|-------|-------|------|------|
| Nominal Capacity (L) | 1000 | 1500 | 2000 | 2500 | 3000 | 4000 | 5000 |
| Upper Heating Coil Power (kW) | 72 | 108 | 144 | 180 | 215 | 287 | 359 |
| Lower Heating Coil Power (kW) | 72 | 108 | 144 | 180 | 215 | 287 | 359 |
| Tank Length (mm) | 2185 | 2265 | 2184 | 2590 | 2790 | 2869 | 2960 |
| Tank Diameter (mm) | 970 | 1240 | 1440 | 1300 | 1350 | 1500 | 1700 |
| Shipping Weight (kg) | 187 | 264 | 324.5 | 401.5 | 445.5 | 638 | 704 |

| RHC-B | | | | | | | | | |
|----------------------|------|------|------|------|------|------|------|------|------|
| Nominal Capacity (L) | 500 | 800 | 1000 | 1500 | 2000 | 2500 | 3000 | 4000 | 5000 |
| Tank Length (mm) | 1824 | 1950 | 2200 | 2245 | 2184 | 2590 | 2790 | 2869 | 2960 |
| Tank Diameter (mm) | 760 | 1000 | 1000 | 1200 | 1200 | 1300 | 1350 | 1500 | 1700 |
| Shipping Weight (kg) | 45 | 50 | 75 | 110 | 1110 | 300 | 335 | 440 | 475 |





engineered for life™



@rheemmea



www.rheem-mea.com



Rheem Middle East

UAE: RMEA Manufacturing LLC | Onyx 2C, Level P3C, Offices 301-304C, The Greens Dubai, UAE | Tel: +971 4 230 5100

KSA: Rheem Innovation and Learning Centre | Riyadh Building 14, Business District, Airport Road, Riyadh, KSA | Tel: +966 11 494 5222